



External Quality Assessment Services

- ◆ Point-of-care tests



Global touch - Local view



Clinical Chemistry

Acid-base status and electrolytes
e-scheme

C-reactive protein (CRP),
quantitative methods
Also suitable for Nycocard Read and
QuikRead

C-reactive protein (CRP),
visual reading (semi-quantitative
methods)

Drug abuse screening in urine

Dry chemistry

Dry chemistry and Haemoglobin
Only for dry chemistry analysers

Faecal blood

Glucose meters

Glycated haemoglobin A1c
Not suitable for Nycocard Reader

Haemoglobin

Haemoglobin, 3-level specimens,
for POC and cell counters

Pregnancy test

Troponin I and troponin T,
detection (qualitative test)

Urine, strip tests A

Microbiology

EBV mononucleosis
(heterophile antibodies)

***Helicobacter pylori*,** antigen
detection in faeces

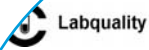
Influenza virus A+B,
antigen detection
Not suitable for IF technique

***Plasmodium falciparum*,**
antigen detection

Puumala virus, antibodies
(Nephropathia epidemica)

RS virus, antigen detection
Not suitable for IF technique

Streptococcus (group A),
antigen detection



External Quality Assessment Schemes

Glucose Meters 1, 2009

Thank you for participating in this EQA survey. In this Glucose Meters survey 539 laboratories from 11 countries participated and results from 3448 glucose meters were received.

Samples

The samples used in this survey are artificial, so different meters and strips give different results. Within a given output group, the level of the results is the same for all meters. Laboratories should compare their results only with those belonging to the same output group.

Results

The printout includes an instrument-specific histogram for each glucose meter. The identification number appears in brackets after the strip name on the histogram when the number is higher than one.

Numerical summary is also included grouping results according to used strip.

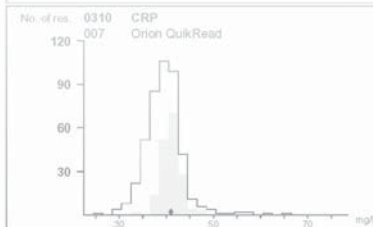
Pro
99-1
Items
Survey
Report
The repr
- Individu
(if results
returned)
- Numer

Inquire
Survey
questi
error
prog
Le

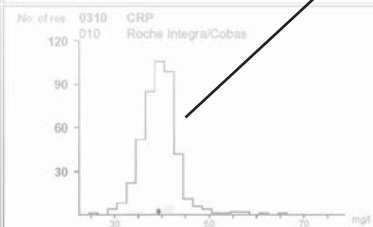
LABQUALITY
Faecal blood 1/2009

Spectrum 1	req
Acton Faecal Blood, Medix Biochemics	42
Hemates LA, Orion Diagnostica	8
QuikRead FDB, Orion Diagnostica	7
Hemagen DBT, Human	11
HemoCult Spine, Beckman Coulter	11
Hemotape, Seratek	8
HemoFEC, Medipharma	1
Hemta screen, Immunovista	14
Hemotest, Wint	1
Coult Blood tests, Amelk	1
FDB, Immovision	1
Dix-Dent, SA	1
HemoCult F	1
HESACON Q&Screen, Human	1
Faecal Occult Blood, Vitehal	1
HESACHECK 2/IMC/Read	1
HemoCult, Care Diagnostica	1
Geopost	1
FDBV, Budigme	1
HESACHECK 2, Vite lab	1
HESACHECK 1, Vite lab	1

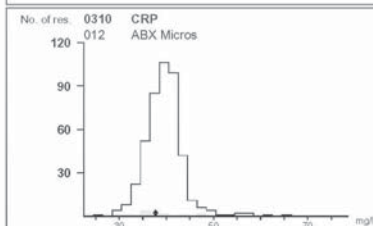
Table of results
Report letter
Histograms



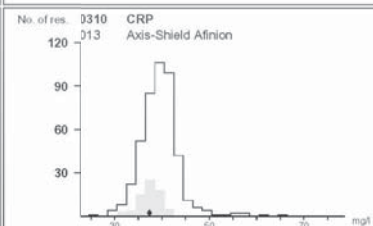
Result	41	
Results	Own group	All output groups
\bar{x} (mean)	41	39
n (No of res)	174	448
$\bar{x} \pm 15\%$ (target limits)	35 - 47	33 - 45
SD (std deviation)	2	4
CV%	5.2	9.0
Median	41	40
Range of variation	33 - 66	25 - 66
Rejected	1	6
Qualifying requirements	32 - 50	---



Result	39	
Results	Own group	All output groups
\bar{x} (mean)	39	39
n (No of res)	17	448
$\bar{x} \pm 15\%$ (target limits)	33 - 45	33 - 45
SD (std deviation)	3	4
CV%	8.7	9.0
Median	40	40
Range of variation	33 - 46	25 - 66
Rejected	0	6
Qualifying requirements	30 - 50	---



Result	38	
Results	Own group	All output groups
\bar{x} (mean)	38	39
n (No of res)	15	448
$\bar{x} \pm 15\%$ (target limits)	32 - 43	33 - 45
SD (std deviation)	5	4
CV%	13.4	9.0
Median	37	40
Range of variation	29 - 48	25 - 66
Rejected	0	6
Qualifying requirements	22 - 52	---



Result	37	
Results	Own group	All output groups
\bar{x} (mean)	37	39
n (No of res)	70	448
$\bar{x} \pm 15\%$ (target limits)	32 - 43	33 - 45
SD (std deviation)	2	4
CV%	6.3	9.0
Median	37	40
Range of variation	31 - 42	25 - 66
Rejected	0	6
Qualifying requirements	30 - 44	---

Labquality Global touch - Local view

- Long experience as an EQA organizer, founded in 1971.
- Impartial organization.
- International co-operation with experts and EQA organizers.
- Wide selection of the schemes. Schemes for laboratories and also for primary health care units.
- Flexible participation and customized programs.
- High quality specimens and sample materials. Samples are made by experts in 60 % of surveys, we use authentic samples when ever it is possible. Lyophilized samples are used when more stability is needed.
- Professional and easy to reach scheme coordinators and client service, personal service by phone and email if you need our help.
- Results are published on internet (Participant services) right after the survey is ready.
- Labquality´s quality system has been certified to ISO 9001:2000 standard. Accreditation according to the standard ISO 17043 is in the process. Our quality system is open also for client audits.

Our clients have said, that we have

- Clear instructions
- Easy to handle samples
- Understandable and extensive reports
- Professional personnel
- Accurate schedules

Labquality's programme for 2010 - 2011 will be published in September 2009.



Labquality

Ratamestarinkatu 11, FI- 00520 HELSINKI
tel. + 358 9 8566 8200, fax. +358 9 8566 8280
info@labquality.fi www.labquality.fi