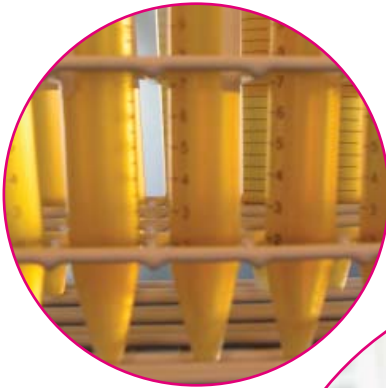




External Quality Assessment Services

- ◆ Clinical Chemistry
- ◆ Instruments



Global touch - Local view



General Clinical Chemistry

Labquality has two different programmes for laboratories' external quality control in general clinical chemistry:

1) Clinical chemistry (Long-term) where target values are stated,

DayTrol, human serum
LongTrol, bovine serum

2) Clinical chemistry (Short-term) with unknown concentrations.

Serum A

Bilirubin, neonatal

C-reactive protein

Haemoglobin

Serum B and C (2-level)

Special Clinical Chemistry

Acid-base status and electrolytes
e-scheme

Albumin and creatinine in urine Only for quantitative analyses

Alcohol in blood or serum
For clinical and forensic laboratories

Ethanol+Methanol+
Isopropanol in whole blood
Ethanol+Methanol+
Isopropanol in serum
Ethylene glycol in whole
blood
Ethylene glycol in serum

Allergy in vitro diagnostics
e-scheme

Labquality

Ammonium ion

Angiotensin convertase (ACE)

Beta-hydroxybutyrate

Bile acids

Bilirubin

Also suitable for linearity measurements for bilirubinometers and acid-base status analyzers.

Bilirubin, conjugated

Chromogranin A

**C-reactive protein (CRP),
quantitative methods**

Also suitable for Nycocard Read and QuikRead

**C-reactive protein (CRP),
visual reading (semi-quantitative
methods)**

Cystatin C

Decialotransferrin

Down's syndrome screening **NEW**

**Drug abuse screening in
urine**

**Drug abuse screening and
confirmation in urine**

**Drug monitoring (therapeutic
drugs)**

**Drug monitoring (therapeutic
drugs)
and hydroxycarbazepine**

Dry chemistry

Dry chemistry and Haemoglobin

Eosinophil cationic protein

Erythrocyte sedimentation rate

Faecal blood

Folate, erythrocytes

Glucose meters

Glycated haemoglobin A1c

e-scheme

Glycated haemoglobin A1c, haemoglobin variants

Haemoglobin, 3-level samples, POC

Haemoglobin, 3-level samples, Cell counters

Haemoxymeters

Homocystein

Hormones A: Basic analytes of hormone and immunochemistry

Hormones B: Steroid and peptide hormones

Lipids and lipoproteins Lipo(a)

Methyl malonate

Myocardial markers

Myocardial markers and CRP, low concentration

Nasal swab cells

e-scheme

Natriuretic peptides, B-type

Parathyroid hormone

Pregnancy test

Prostate specific antigen

e-scheme

Proteins in cerebrospinal fluid

Proteins, electrophoresis

Proteins, immunochemical determinations

Sputum cells e-scheme

Synovial fluid crystals

Troponin I and troponin T, detection (qualitative test)

Tumour markers

Urine, identification of cells and other particles [digital pictures] e-scheme

Urine, quantitative chemistry

Urine, strip tests A

Urine, strip tests B, cell count and limited selection of quantitative chemistry

Vitamin A, E and D metabolites

Instruments

Wavelength scale accuracy

Wavelength accuracy at 340 nm

Linearity and diffused light at 340 nm, 405 nm or 540 nm

Suitable also for ELISA readers

Dilution ratio; connected to the linearity and diffused light at 340 nm or 405 nm

ELISA reader photometry control

Labquality Global touch - Local view

- Long experience as an EQA organizer, founded in 1971.
- Impartial organization.
- International co-operation with experts and EQA organizers.
- Wide selection of the schemes. Schemes for laboratories and also for primary health care units.
- Flexible participation and customized programs.
- High quality specimens and sample materials. Samples are made by experts in 60 % of surveys, we use authentic samples when ever it is possible. Lyophilized samples are used when more stability is needed.
- Professional and easy to reach scheme coordinators and client service, personal service by phone and email if you need our help.
- Results are published on internet (Participant services) right after the survey is ready.
- Labquality's quality system has been certified to ISO 9001:2000 standard. Accreditation according to the standard ISO 17043 is in the process. Our quality system is open also for client audits.

Our clients have said, that we have

- Clear instructions
- Easy to handle samples
- Understandable and extensive reports
- Professional personnel
- Accurate schedules

Labquality's programme for 2010 - 2011 will be published in September 2009.



Labquality

Ratamestarinkatu 11, FI- 00520 HELSINKI
tel. + 358 9 8566 8200, fax. +358 9 8566 8280
info@labquality.fi www.labquality.fi