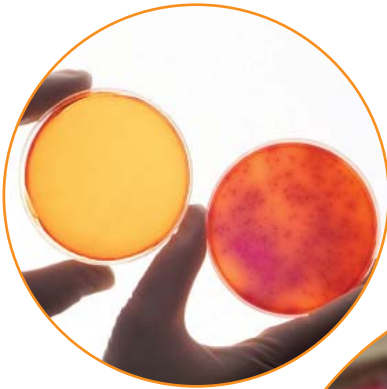




External Quality Assessment Services

- ◆ Immunology, diagnostic
- ◆ Microbiology
 - Bacterial serology
 - Bacteriology
 - Mycology
 - Parasitology
 - Virology



Global touch - Local view



Immunology, diagnostic

ANCA and GbmAb

Antinuclear antibodies

Coeliac disease

Liver disease and autoimmune gastritis serology

Phospholipid antibodies

Rheumatoid factor and citrullinic peptide antibodies

Thyroid gland antibodies

Thyroid stimulating hormone receptor, antibody

Bacterial serology

Antistreptolysin titre

Bordetella pertussis, antibodies

Borrelia burgdorferi, antibodies

Chlamydia pneumoniae, antibodies

Enteropathogens, antibodies

Helicobacter pylori, antibodies

Mycoplasma pneumoniae, antibodies

Syphilis serology

Labquality

Bacteriology and mycology

Bacteriological staining, direct (clinical samples) [digital pictures] *e-scheme NEW for year 2010*

Blood culture *

Blood culture, screening * *NEW for year 2010*

Cerebrospinal fluid, culture, screening *

Chlamydia trachomatis, nucleic acid amplification method; *specimen volume 1.5 mL or 4 mL*

Clostridium difficile, culture and toxin detection *

Faecal culture *

Fungal culture *

General bacteriology 1 (aerobes and anaerobes) *

General bacteriology 1 also includes general bacteriology 2

General bacteriology 2 * *Only aerobes, see General bacteriology 1. General bacteriology 1 also includes general bacteriology 2*

Gram stain, colonies

Gram stain, blood culture, *methods without carbon e.g. Bactec (Becton Dickinson) and Signal (Oxoid) etc.*

Gram stain, blood culture, *methods with carbon e.g. BactAlert (BioMérieux) etc.*

Helicobacter pylori, antigen detection in faeces

Mycobacterial culture and smear *

Mycobacterial smear *

Neisseria gonorrhoeae (Gc),
culture *

Neisseria gonorrhoeae (Gc),
nucleic acid amplification method

Salmonella culture *

*Faecal culture (5190) also includes
salmonella culture*

Streptococcus (group A),
antigen detection

Throat streptococcal culture,
screening and identification *

Urine culture, quantitative,
screening *

Urine culture, quantitative,
screening, identification and
susceptibility *

Parasitology

Parasites in blood,
Giemsa stain

Parasites in blood,
May-Grünwald-Giemsa stain

Parasites in faeces

Toxoplasma antibodies,
e-scheme

Virology

Cytomegalovirus, antibodies,
e-scheme *

EBV mononucleosis, antibodies,
specimen volume 0,5 mL or 1,5 mL *

Hepatitis A antibodies * *

e-scheme

Hepatitis B and C *

*specimen volume 0.6 mL, 1.2 mL
or 2.0 mL* *

Hepatitis B, s-antigen antibodies,
quantitative *

Herpes simplex 1 and 2,
antibodies *

HI virus, antibodies *

e-scheme

Influenza virus A+B, detection

Measles virus, antibodies *

Mumps virus, antibodies

Parvovirus, antibodies

Puumala virus, antibodies

Rotavirus and adenovirus,
antigen detection *

RS virus, detection

Rubella virus, antibodies *

Tick-borne encephalitis virus, anti-
bodies *NEW for year 2010*

Varicella-zoster virus, antibodies *

* one donor samples

* Delivery only via local distributor

What is special in Labquality's immunology and microbiology surveys?

- Wide selection: surveys for clinical microbiology laboratories and also for primary health care units.
- In result processing, all laboratories receive laboratory specific result tables and expert comments. Scoring is included for example in HIV, hepatitis and toxoplasma surveys.
- We use one donor plasma/sera samples in surveys that are marked with asterisk (*). One donor samples permit also possibility of clinical interpretation.
- Preliminary results are available at Labquality's website in 2—5 working days after the closing date.

Labquality Global touch - Local view

- Long experience as an EQA organizer, founded in 1971.
- Impartial organization.
- International co-operation with experts and EQA organizers.
- Flexible participation and customized programs.
- Wide selection of the schemes.
- High quality specimens and sample materials.
- Professional and easy-to-reach client service.
- Labquality's quality system has been certified to ISO 9001:2000 standard. Accreditation according to the standard ISO 17043 is in the process.



Labquality

Ratamestarinkatu 11
FI- 00520 HELSINKI
tel. + 358 9 8566 8200
fax. +358 9 8566 8280
info@labquality.fi
www.labquality.fi